

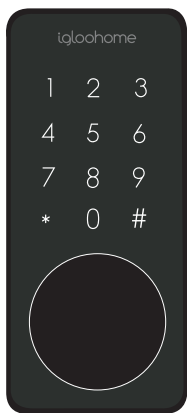
Installers &
User guide
Deadbolt 02.

As our igloohome app is frequently updated, there may be changes to this manual.
Please refer to our website igloohome.co/support for the latest version of the manual.

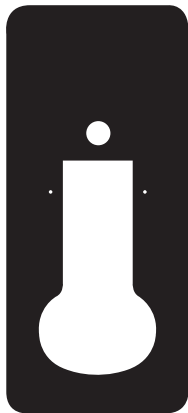
Table of Contents

04	What's Included
05	Specifications
06	Requirements
07	Lock Anatomy
08	Preparing Door for Installation
10	Prepare Lock for Installation
11	Installation Instructions
16	Test Lock
17	Preparing the Door Frame
18	Pairing
19	Features
20	Unlocking
21	Locking
22	Lock Tutorial
25	Lock Behaviour
26	Troubleshoot

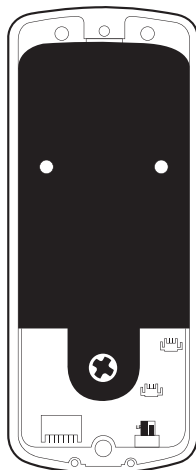
What's Included



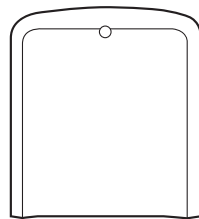
Front Assembly



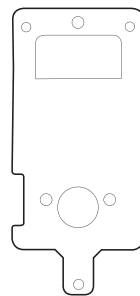
Rubber Gasket



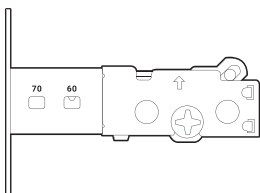
Back Assembly



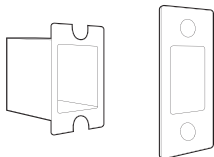
Battery Case Lid



Back Plate



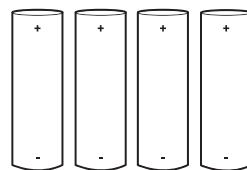
Bolt Assembly



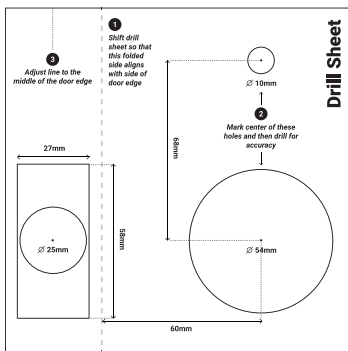
Strike Plate Housing & Strike Plate



Screw Holder



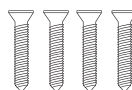
Batteries x4



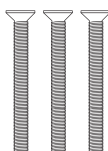
Drill Sheet



5mm Bolt Screw x2



25mm Wood Screw x4



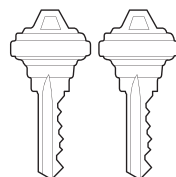
40mm Bolt Screw x3



22mm Bolt Screw



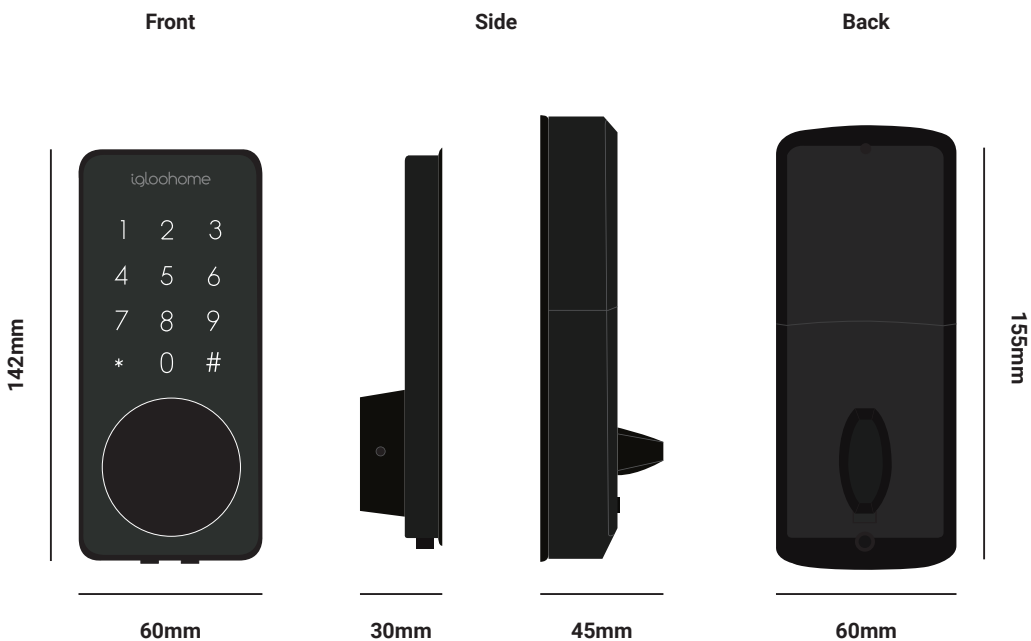
80mm Tailpiece



Keys x2

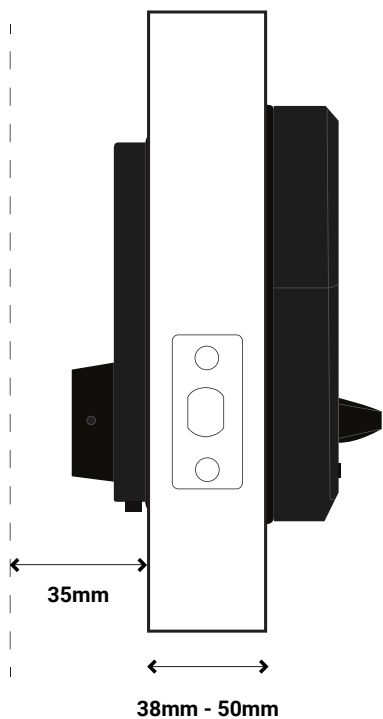
Specifications

Model	igloohome Smart Deadbolt 02
Material	Zinc Alloy
Current Rating (Standby)	~30uA
Current Rating (Active)	~200mA
Batteries	4 x AA Alkaline (Non - Rechargeable)
Unlock Mechanism	Bluetooth, PIN code, Keys

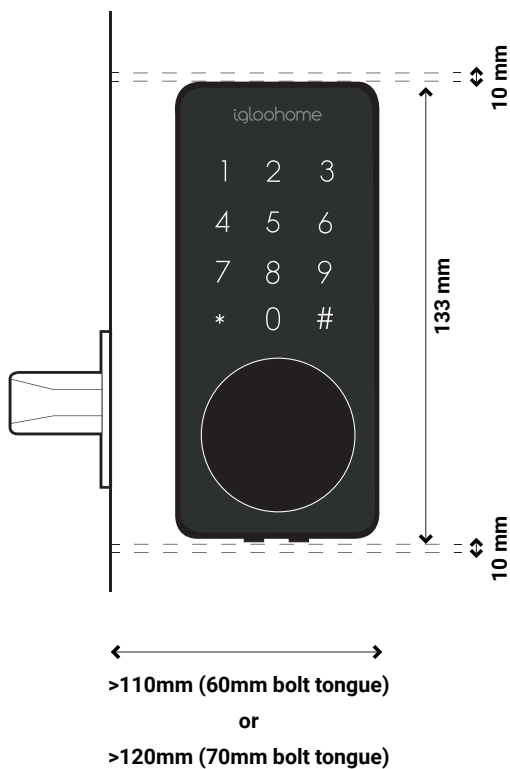


Requirements

Door Thickness & Gate Clearance

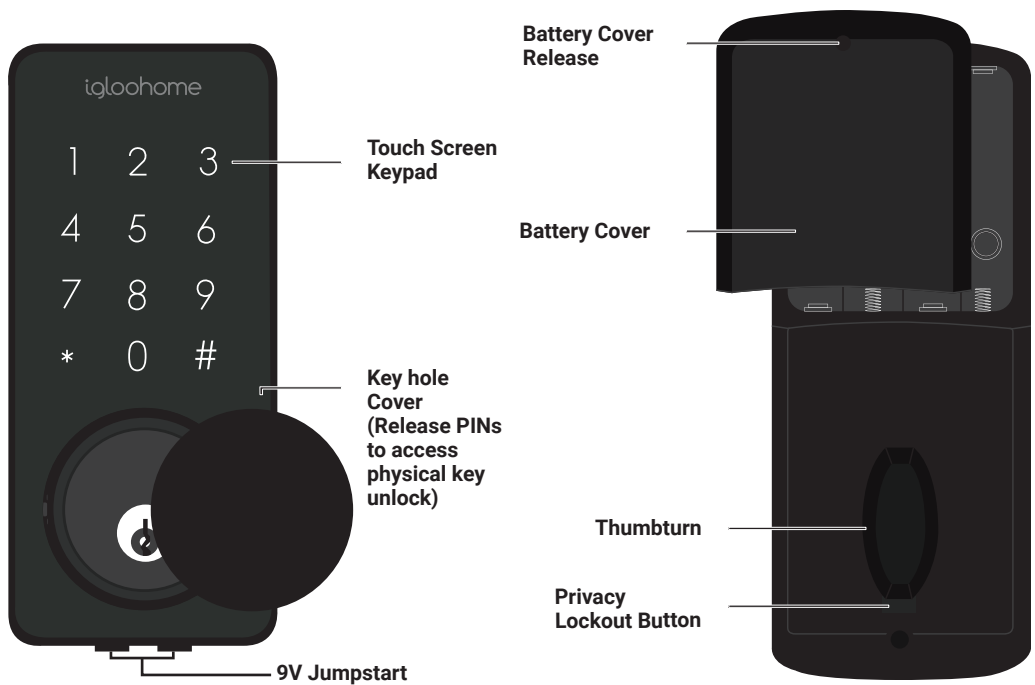


Height & Width



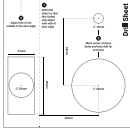
Lock Anatomy

Outer Body



Preparing Door for Installation

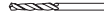
Items needed:



Drill Sheet



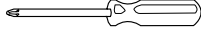
Drill



10mm Drill Bit



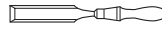
54mm Hole Saw



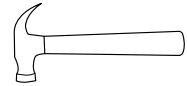
#2 Phillips Screw Driver



20mm Spade Bit



20mm Chisel



Hammer

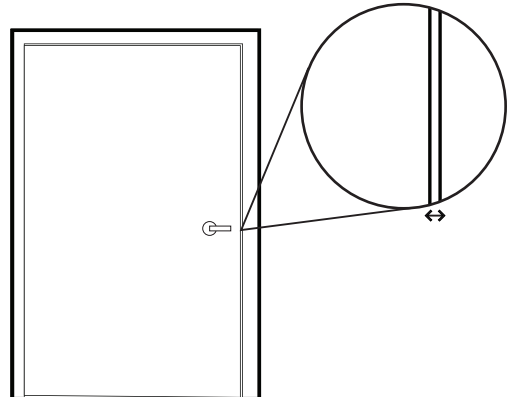
Recommended

Door and door frame material : **Wood**



Recommended

Gap between door and door frame: **<3mm**



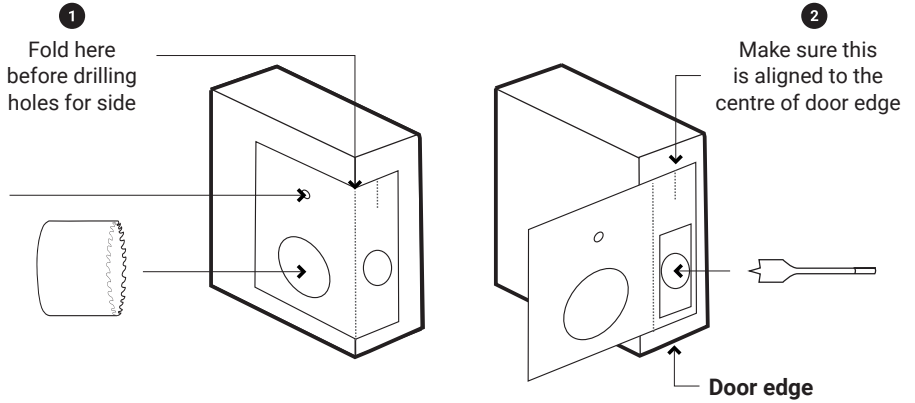
* Please ensure that there is an existing handle on your door for push - pull access.

* **Not for: metal gates, glass doors or sliding doors.**

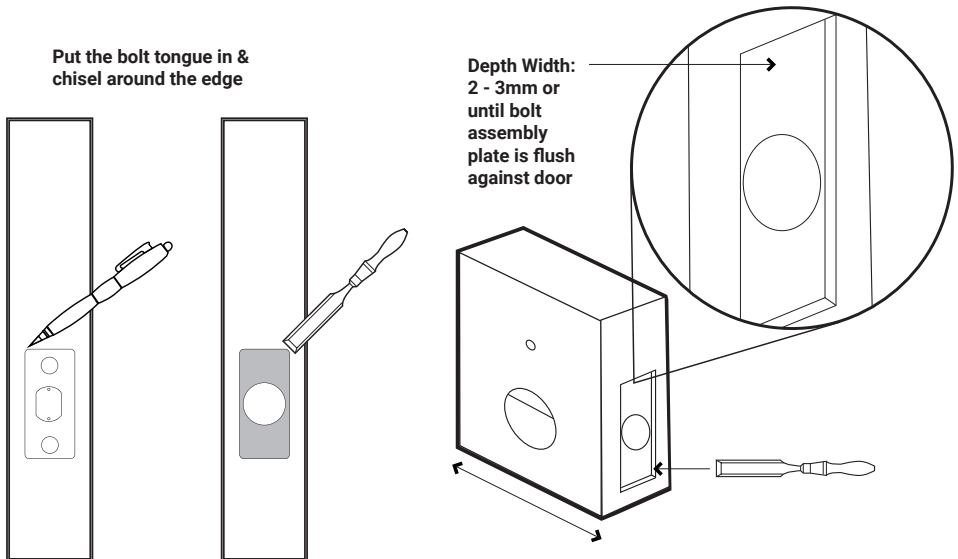
If you are unsure if your door is suitable, send us web links to your door pictures to support@igloohome.co

How to use the Drill Sheet

Drilling (Door)



Chiselling

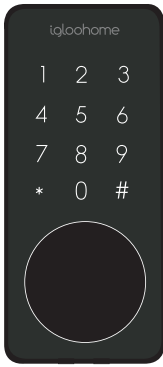


* Mark the center of the holes and then drill for accuracy.

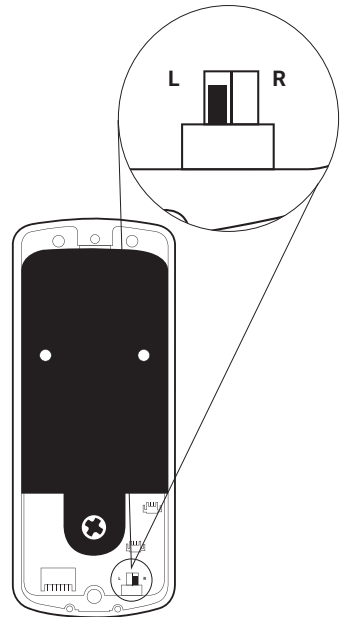
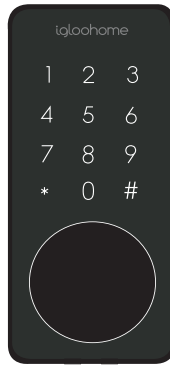
Prepare Lock For Installation

1 Set Back Assembly for Left / Right Installation

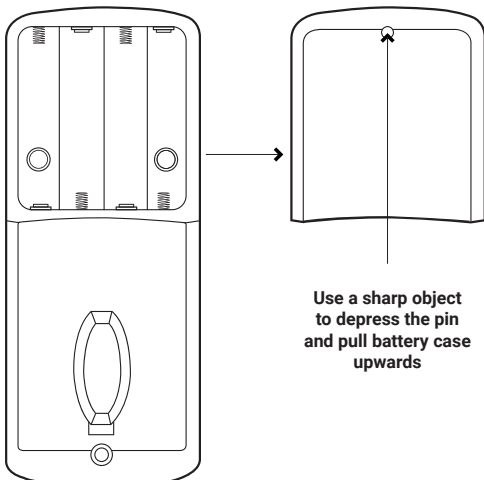
Right Installation
Set the toggle to 'R' for right-side installation.



Left Installation
Set the toggle to 'L' for left-side installation.

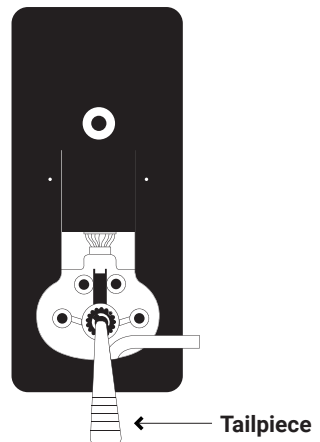


2 Remove Battery Cover



3 Change Tailpiece (Optional)

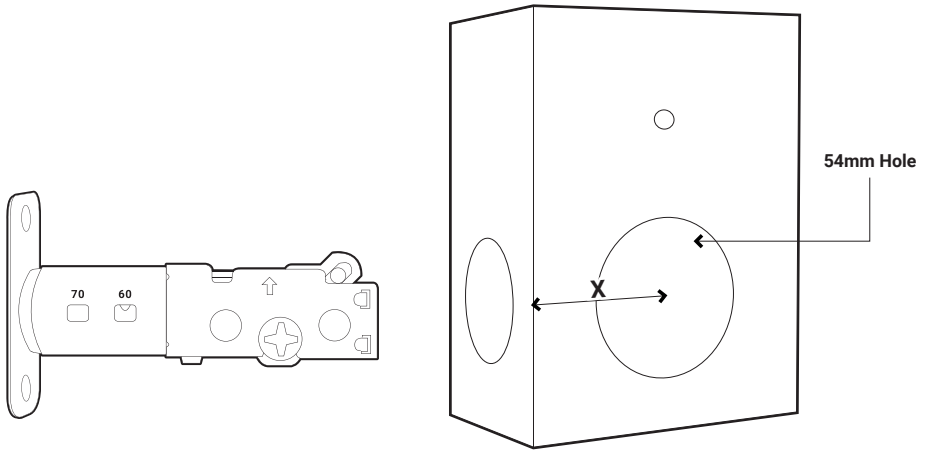
For door thickness >50mm, change the default (60mm) tailpiece attached to the 80mm tailpiece. Go to igloohome.co/support for more information.



Installation Instructions

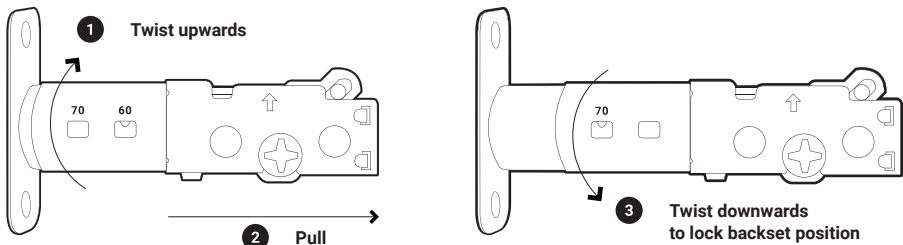
1 Measure

If you are replacing your current deadbolt lock, industry standards are 60mm or 70mm backset. To determine which basket length you should use, so measure the distance (x) between the center of 54mm hole to door edge.



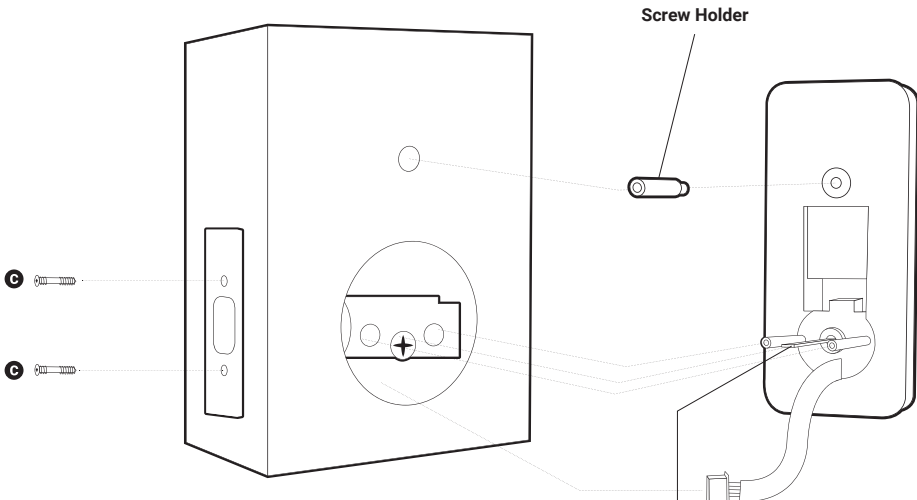
Prepare bolt assembly based on the distance (x)

Bolt ships with bolt assembly in 60mm position. If required, twist the bolt and pull to extend (simultaneously) to 70mm backset position (current drill dimensions are fitted for 60mm position).

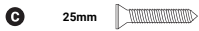


2 Insert bolt and front assembly into door edge

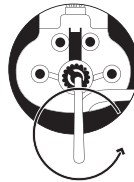
The '+' hole on the backset should be in the middle of the hole.



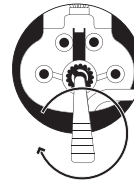
Screws



Right Installation

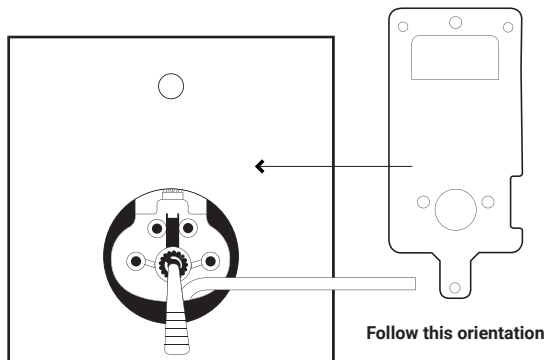


Left Installation

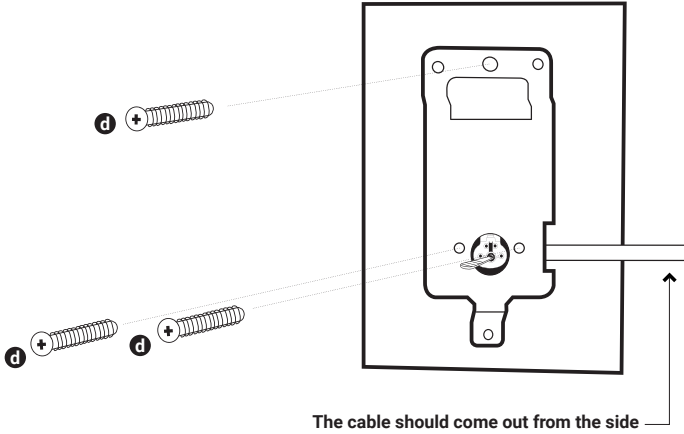


3 Secure the Front Assembly using the Back Plate.

To do this, place the Back Plate (ensuring the correct side placement).



Screw it to the Front Assembly using the three 40mm screws.

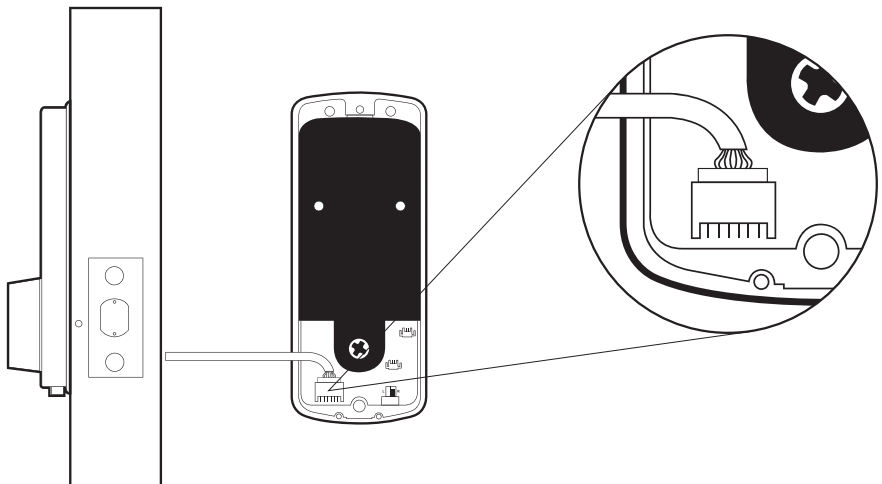


Screws



4 Connect Wire Connector

Connect the Wire connector from the Front Assembly through the 54mm hole to the Back Assembly. Ensure that the wire is installed properly and securely.



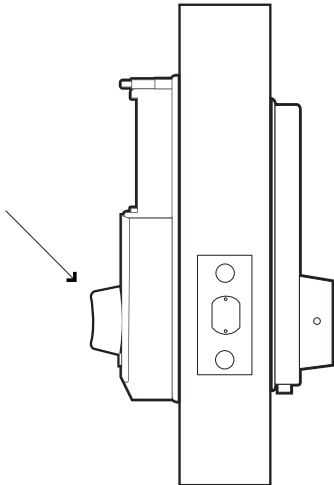
5 Install Sensor Re-lock (Optional accessory)

Please refer to Sensor Re-lock Installation Manual for instructions on how to install the Sensor Re-Lock.

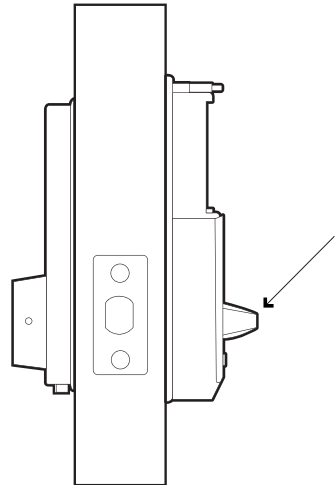
5 Fit Back Assembly to the Door Tailpiece

Ensure thumbturn position is turned to 'unlock' position.

Left Installation





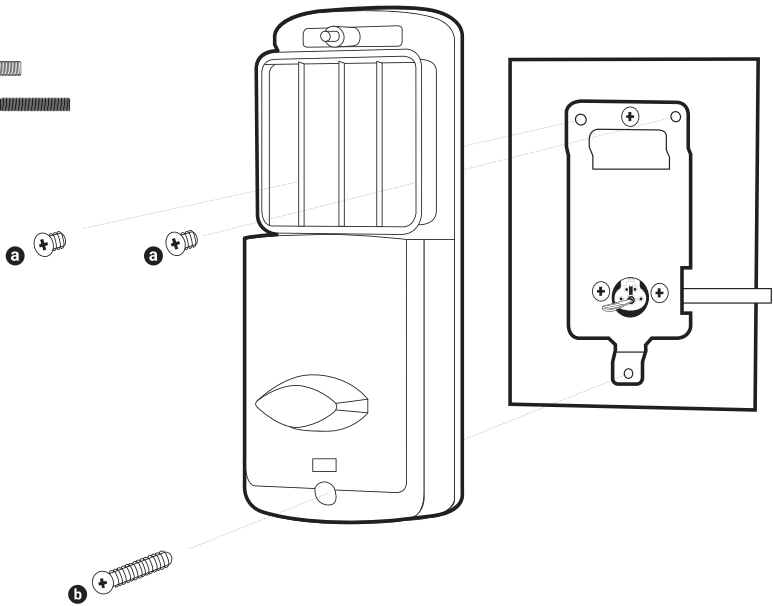
Right Installation



6 Secure the Back Assembly

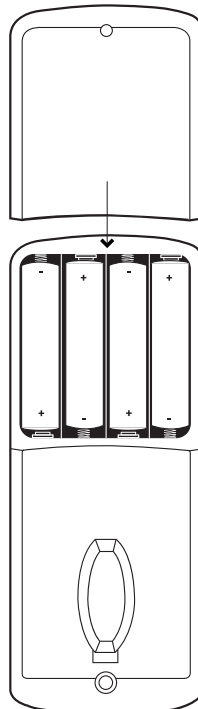
Screws

- a 05mm 
- b 22mm 



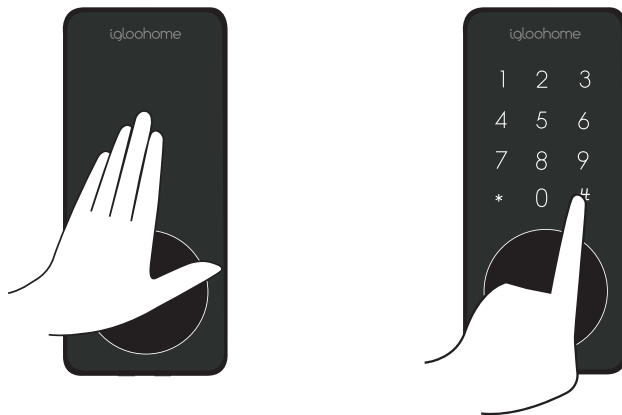
Insert 4 of AA Batteries

Before closing the battery case lid.



Test Lock

Place hand over your lock to activate touchpad and hold # to lock.



Does your bolt unlock?

Yes

Congrats!
Your lock is correctly installed.
Proceed to next steps.

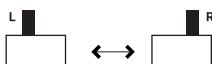
No

Bummer!
Does the bolt tongue slide out
when you turn the thumbturn?

Yes

**Left-Right toggle
incorrectly set**

Troubleshoot: Try Setting the
left-right toggle on your back
assembly to the correct side.
(See Pg. 10)



No

**Tailpiece and/or thumbturn
incorrectly set**

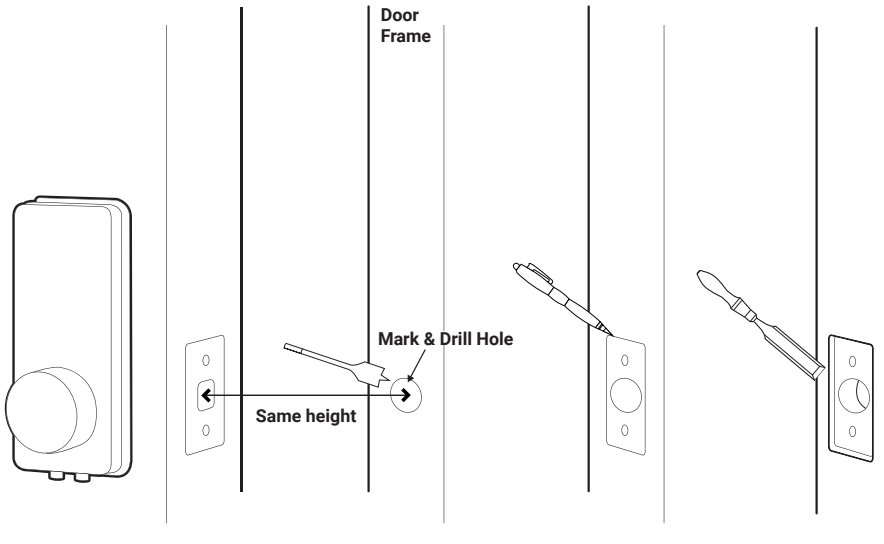
Troubleshoot: Disassemble
lock and install it again.

Still experiencing issues?
Go to igloohome.co/support for more help

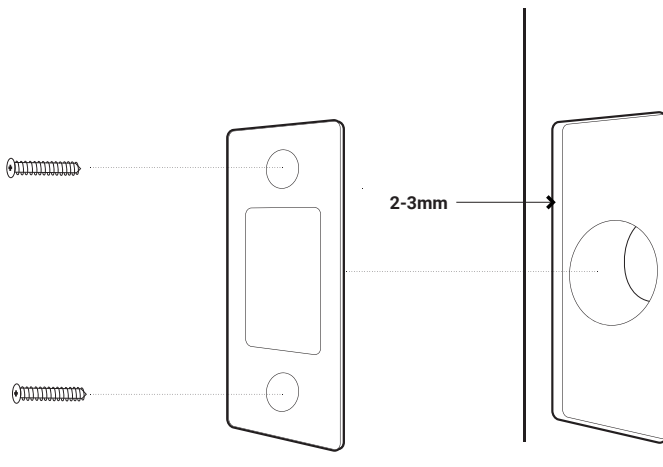
Preparing the Door Frame

1 Ensure to align the lock to the door frame and mark it down.

2 Mark out where the bolt tongue locks then drill a corresponding hole on door frame. Chisel to fit the strike plate in as well.



3 Secure strike plate housing and strike plate using 2x 25mm wood screws.



Pairing



Download igloohome app
from App Store/Google Play

Register

Register a new
account or,

Log in

Login with an existing
account on app

CHECKLIST

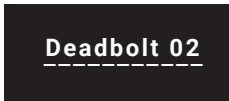
- Lock has not been paired
- The keypad stays awake during pairing
- Turn on your phone's Bluetooth and Internet connection

New users

1. Upon **Login** > **Add a new igloohome lock** > **Select your Product** > **Pair Lock to App** > **Next**



2. **Enter your lock name** > Confirm > **Create New Home** > Name Your Home > Submit > Successfully Added!



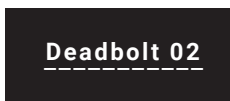
Current users

1. Go to **Menu** > **Configuration** > **Add Lock** > **Select your Product** > Follow **Steps for Pairing Lock To App** > Select **Bluetooth Lock** > **Lock Paired!**



2. Add lock to a new or existing home.

2.1 **Enter your lock name** > Confirm > **Create new home** or **Add lock to existing Home** > Name Your Home > Submit > Successfully Added!



Features

PIN / Bluetooth Unlock



Bluetooth Master Key

The igloohome Smart Deadbolt 02 unlocks with Bluetooth via the app.



Decoy PIN Code

A total of 16 decoy digits including PIN code can be entered to prevent the PIN code from being exposed.



Bluetooth Guest Key

Bluetooth keys based on duration can be generated and shared with guests.



Master PIN Code

The igloohome Smart Deadbolt 02 unlocks with a permanent Master PIN Code.



User PIN Code

The mobile app can generate user PIN codes, with validity duration from One-Time, Permanent, or a Duration based on Date-time.

Lock / Unlock



Timer Re-lock

After successfully unlocking, the igloohome Deadbolt 02 will re-lock after a period of time (between 5 to 120 seconds). The owner sets this function.



Manual Locking

Hold the '#' key for 2 seconds to lock the igloohome Deadbolt 02.



Sensor Re-lock (Optional)

The Sensor detects when the door is closed and locks automatically.

Security / Alarms



Security Lockout Mode

After 5 consecutive unsuccessful attempts at entering a PIN code, the igloohome Smart Deadbolt 02 will sound an alarm and be unresponsive for 5 minutes. Physical key and Bluetooth Unlock can be used to unlock in this state.



Privacy Lockout Mode

Activate this from indoors to prevent entry from outsiders. Physical key can be used to unlock in this state.



Activity Logs

Entry via PIN codes and Bluetooth Key will be logged in the app.

Bluetooth key access logs are updated in real-time and PIN code access logs are updated when the owner uses a bluetooth key or update logs.

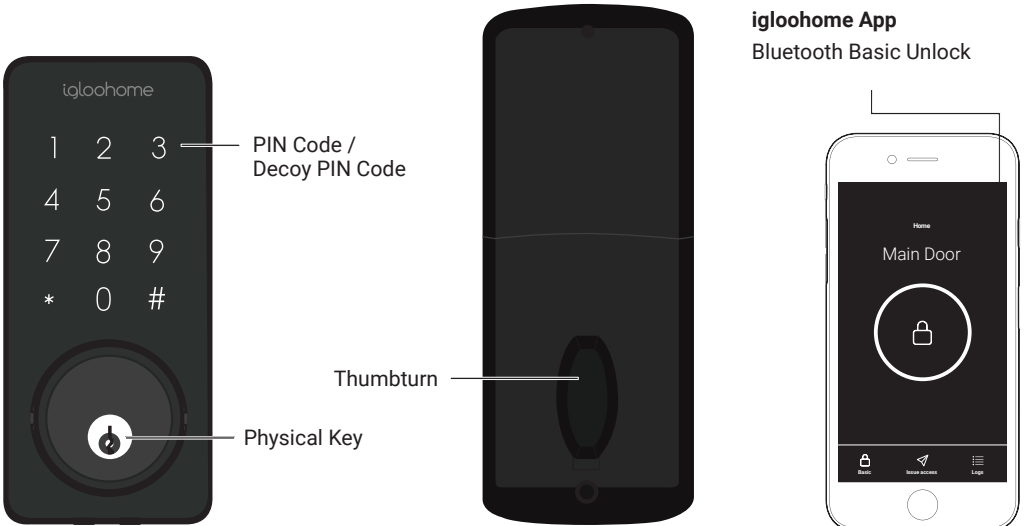


Tamper Alarm

The lock will sound if intruders try to pry the lock from the door.

Unlocking

To unlock the door



Legend



PIN Code

Key in your PIN code and press '#'



Decoy PIN Code

Key in up to a total of 16 digits, including the PIN code, followed by '#'



Bluetooth Basic Unlock

On your app, click on the Bluetooth Unlock button and tap on your lock



Bluetooth Guest Key

Refer to lock tutorial - Step 10



Physical Key

Use the physical key to unlock the door

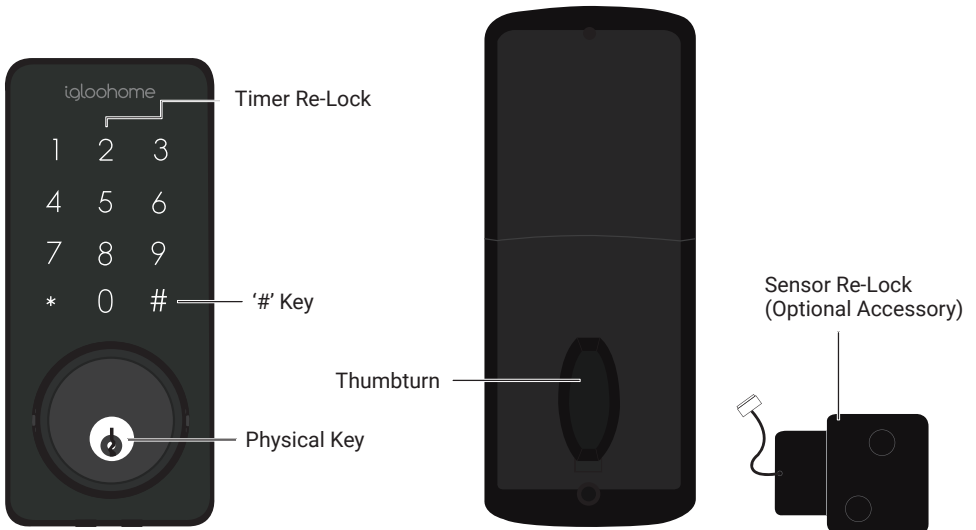


Thumbturn

Use thumbturn at the back of lock

Locking

To lock the door



Legend



'#' Key
Press and hold '#'



Physical Key
Use the physical key to lock the door



Timer Re-Lock
Refer to Lock Tutorial - Step 8



Thumbturn
Use thumbturn at the back of lock



Sensor Re-Lock (Optional Accessory)
Automatic locking after door closes

Lock Tutorial



- on igloohome App



- on Deadbolt 02 Keypad

1 Default factory PIN code



In the factory mode (before pairing), the PIN to unlock is * **1234567890** #

2 Setting Master PIN code



Before proceeding, turn on your Bluetooth and ensure that you are within Bluetooth range of the lock.

Home > Select Lock Name > > Master PIN Code > >

Enter 7-9 digit PIN

**** **

>

Repeat PIN

**** **

3 Adding new PIN code



New PIN codes can be added from

(a)

Home > Select Lock Name > > > Select One-Time/Permanent/Duration PIN

PIN Type	Steps	Activate within*
One-Time PIN	Add description > OK	6 hrs of generation
Permanent PIN	Add description > OK	24hrs of generation
Duration PIN	Add description > Start, End Date and Time > Add duration PIN	24hrs from the start time

On your Lock Info page, under Ad hoc PINs you should see the new PIN code

Note: PIN code description can be changed by clicking on > > Select PIN >

*To activate, unlock once with the PIN code. If unactivated within this period of time, the PIN code will become invalid.

4 Activity Logs



To View

Home > Select Lock Name >

To Update

Home > Select Lock Name > >

Lock Tutorial



- on igloohome App



- on Deadbolt 02 Keypad

5 Editing & Deleting PIN Codes



For locks with Bluetooth ID: **IGB2 - C2A4P2_XXXXXX**

To Edit: Home > Select Lock Name > > Select PIN >

To Delete: Home > Select Lock Name > > Select PIN >

- * Before editing a PIN code, please make sure that it is used once.
- * Editing and deleting PIN codes require you to be within Bluetooth range of the lock.
- * Edited PINs can only be within 4 - 9 digits long.
- * Deleted PINs will be reflected in 'INACTIVE' tab.
- * Master PIN code cannot be changed via this method; refer to step 2.

For locks with Bluetooth ID: **IGB2 - C2A4P1_XXXXXX**



Once PIN code is generated, user must key the generated code onto the Deadbolt 02 keypad followed by # to activate the code before proceeding. To change the PIN, enter:

*** 1 0 # <Current PIN Code> # <New PIN Code (4-9 Digits)> # <New PIN Code (4-9 Digits)>**

For example:

Current PIN Code	1234 5678
New PIN Code	010101
On Keypad	* 1 0 # 1234 5678 # 010101 # 010101 #

- * Master PIN code cannot be changed via this method; refer to step 2. The new PIN code will only appear in the PIN list after updating logs; refer to step 4.
- * If at any time an error beep (4 consecutive beeps) is heard, restart the program from the beginning.
- * PIN codes cannot be deleted individually via app for locks with this Bluetooth ID. Should you wish to delete PINs, you will have to Reset Lock (See pg. 23)

6 Removing used PIN codes from app view



Go to Home > Select Lock Name > > 'INACTIVE' > Select PIN >

The PIN code will be removed from your app view.

- * Only inactive PINs can be removed.

Lock Tutorial



- on igloohome App





- on Deadbolt 02 Keypad

7 Resetting PIN Codes



Ensure that Bluetooth is switched on, and you are within Bluetooth range of the lock.

Go to Home > Select Lock Name >  >  > Reset Lock

Lock will reset all codes except for Master PIN, and all PIN codes previously generated are no longer valid (See pg. 23)

8 Enabling & Disabling Timer Re-Lock*



To Enable	* 2 1 # <Master PIN> # <Duration between 5-120 seconds> #
To Disable	* 2 0 # <Master PIN> #

* By default, Timer Re-lock is disabled.

9 Privacy Lockout Mode



To prevent others from using PIN code and Bluetooth Key to unlock while you are inside the property. Note: Physical key can be used to unlock in this mode.

To Activate	Press the Privacy Lockout button located below the thumb turn on the back of the lock. You will hear a long beep to indicate the keypad lockout is activated.
To Disable	Press the Privacy Lockout button located below the thumb turn on the back of the lock. You will hear a quick 2 beeps to indicate the keypad lockout is disabled.

Lock Tutorial



- on igloohome App






- on Deadbolt 02 Keypad


10 Bluetooth Key Sharing



Bluetooth sharing allows you to share a Bluetooth Key with other users for mobile access. It allows your guests to unlock the igloohome smart lock via Bluetooth.

To create a Bluetooth Key, Go to Home > Select Lock Name >  >  > Choose who to issue key to > Access Type : Bluetooth Key > Enter Access Details > 

To receive a Bluetooth Key, Download the igloohome app from iTunes or Google Play store and register/login to your account

(a) To receive key via QR code, go to Home > Visits >  or

(b) To receive a key via URL, click on the URL and follow the instructions

** Note: Bluetooth Key must be accepted within 1 hour of generation before it expires*

To use a Bluetooth Key, Go to Home > Visits > Click on  to unlock the door

To delete a Bluetooth Key, Go to Home > Select Lock Name >  > 'PENDING' >  > Ok

11 9V Jumpstart Feature



Step 1 - Touch and hold the battery contacts against the 9V jumpstart pin on the lock and you will hear a series of beeps

Step 2 - While holding the 9V battery to the jumpstart, key in your PIN code on the keypad followed by '#' to unlock

Lock Behaviour

	Security Lockout Mode	Privacy Lockout Mode
Activated by	5 consecutive invalid PIN codes	Press the Privacy Lockout button located below the thumb turn on the back of the lock till you hear a long beep
Disable By	Wait for 5 Minutes Bluetooth Unlock Physical Key	Press Privacy Lockout Button Physical Key Thumbturn
Behaviour	Keypad is flickering	Keypad does not light up
Duration	Unresponsive for 5 minutes	Unresponsive until Privacy Lockout Mode is disabled

Troubleshoot

Pairing is unsuccessful

- Try with a different mobile device, using the same username and password
- Update your phone's Operating system to the latest version
- Restart the Bluetooth and internet connection on your mobile device
- Restart igloohome app on your mobile device
- Switch to a new set of batteries

Keypad does not light up

- Use a 9V battery to jumpstart and switch to a new set of batteries
- Check if the Deadbolt 02 is in Privacy Lockout Mode

Keypad is flickering

- The Deadbolt 02 is low in battery. Switch to a new set of batteries

Generated PIN codes do not work

- Make sure that the generated PIN codes are activated within the given hours
- Do a Bluetooth Unlock to refresh the app
- PIN codes may have been customised or expired

Changing Batteries

- To open the battery compartment, depress the pin at the top of the back assembly and slide the cover upwards
- Replace all four batteries

Lock is not working when battery level is not 100%

- Do a Bluetooth Key unlock to refresh the battery level on the app
 - Battery level shown in the app may not be accurate
 - Use Alkaline batteries only
 - Do not use: Heavy Duty, Eveready, GP, or rechargeable batteries
- * Using high quality batteries will improve the performance and lifespan of the lock

Bluetooth Key is not working

- Restart the Bluetooth and internet connection on your mobile device
- Check on the timezone of the home listing against your phone time
- Check if the Bluetooth Key is expired. It must be accepted within 1 hour of generation
- Update your igloohome app to the latest version
- Switch to a new set of batteries

Re-lock is not working

- Check battery level of the lock
- Make sure you have enabled timer re-lock

Keypad lights up on touch only

- Check if the Deadbolt 02 is in security lockout mode
- Refer to Lock Tutorial - Step 9

For enquiries go to:
igloohome.co/support